

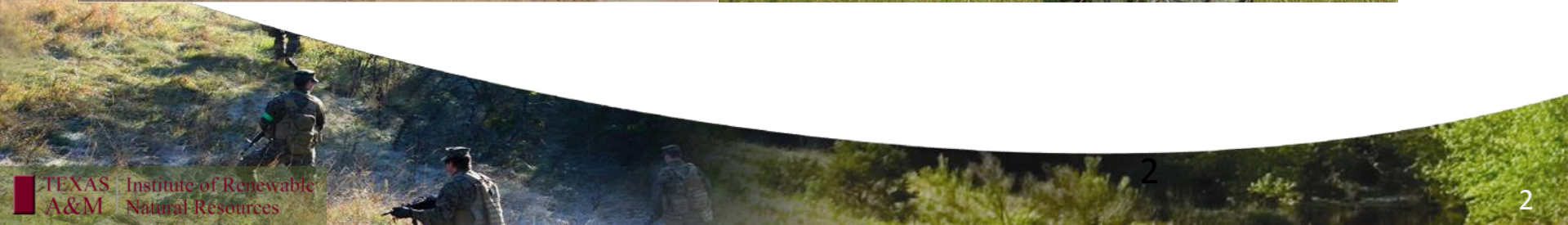
- **Protecting Military Readiness**
- **Sustaining Communities**
- **Supporting the Environment**

**SENTINEL LANDSCAPES – Places where conservation,  
working lands and national defense interests converge**

**Bruce Beard**  
**Institute of Renewable Natural Resources**  
**Texas A&M University**



# Air, Land, and Sea Space for Test and Training Requirements



# TRAINING AND TESTING VITAL TO READINESS MISSION

- Realistic training requires the sustainment of realistic training environments
- Readiness is perishable: skills must be maintained
- Encroachment impacts constrain training and testing activities and ultimately inhibit military readiness

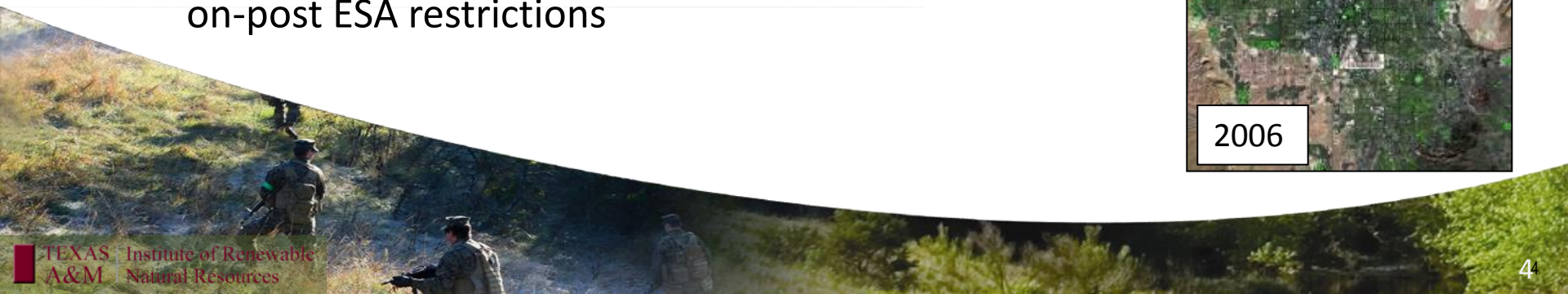
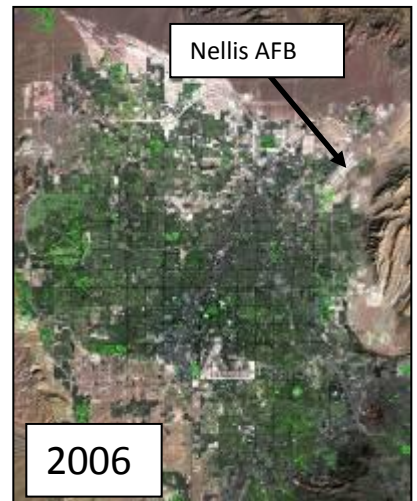
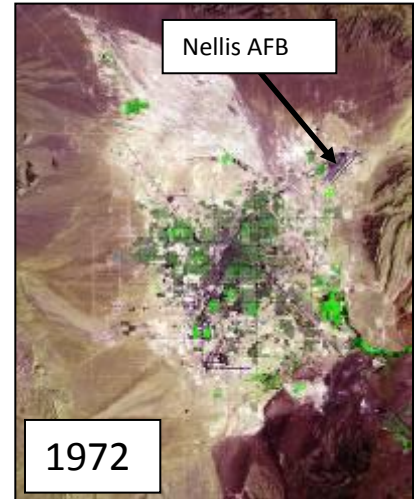


***We must train as we fight because we  
fight as we train***

# ENCROACHMENT IMPACTS

**SITUATION: *Encroachment-induced restrictions inhibit training and testing and reduce readiness***

- Military airfield use impaired by urban sprawl that narrows or eliminates landing and takeoff corridors
- Lights from nearby development impact soldiers' night vision training
- Noise complaints force training restrictions
- Development destroys off-post habitat, forcing more on-post ESA restrictions



# Encroachment at Fort Bragg, NC



# Readiness and Environmental Protection Integration Program – REPI

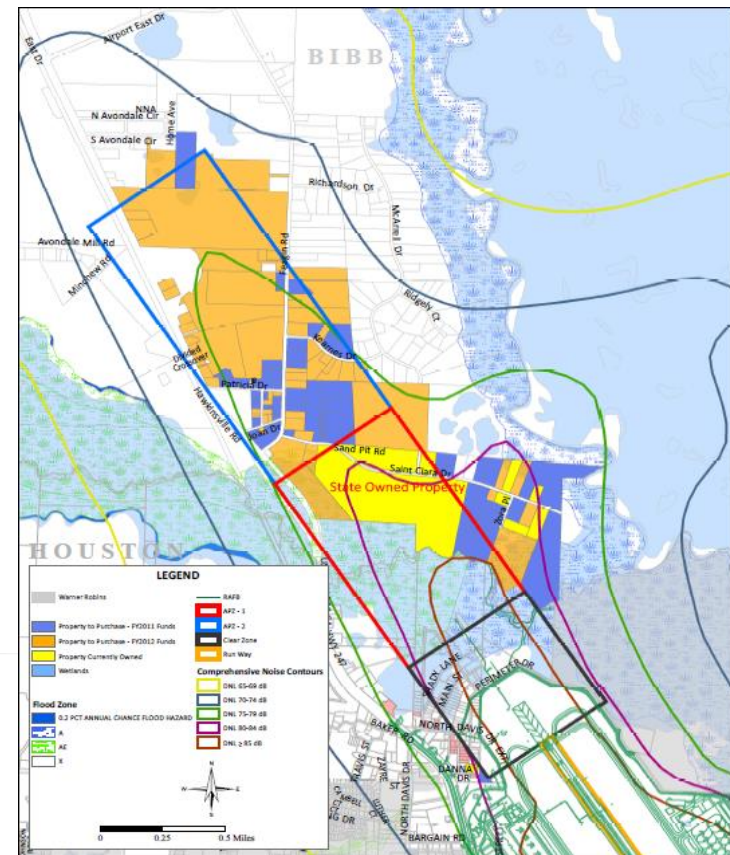
## Buffer Partnership Locations



# REPI Buffer Best Practices: Robins AFB, GA

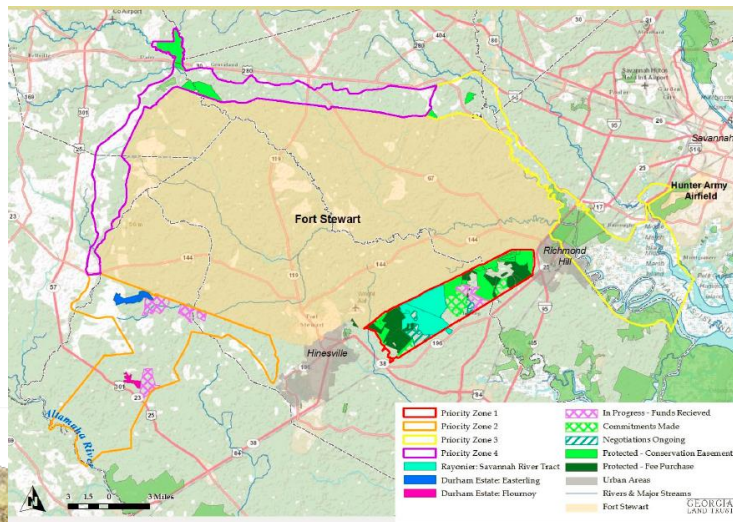
## ▪ Robins AFB partnership with local and regional governments:

- Ballot measure providing \$13 million for buffer acquisitions
- The Greater Macon Chamber of Commerce paid for 125 properties to be appraised in the target area
- 250 incompatibly developed properties in the base's APZs and noise zones are being acquired and permanently removed.



# REPI Buffer Best Practices: Fort Stewart, GA

- Fort Stewart and the Georgia Land Trust won the first ever REPI Challenge
- Bargain sale (approx. 50% FMV) of 5,500 acres by a REIT, Rayonier, Inc.
- Rayonier continues to manage the land for timber production under a long-term lease agreement with the new landowners, GLT – maintains at least 24 jobs
- \$4.5M REPI award matched by \$1M from GLT and \$6.045M landowner donation





# Joint Base Lewis-McChord: REPI Challenge/Sentinel Landscapes

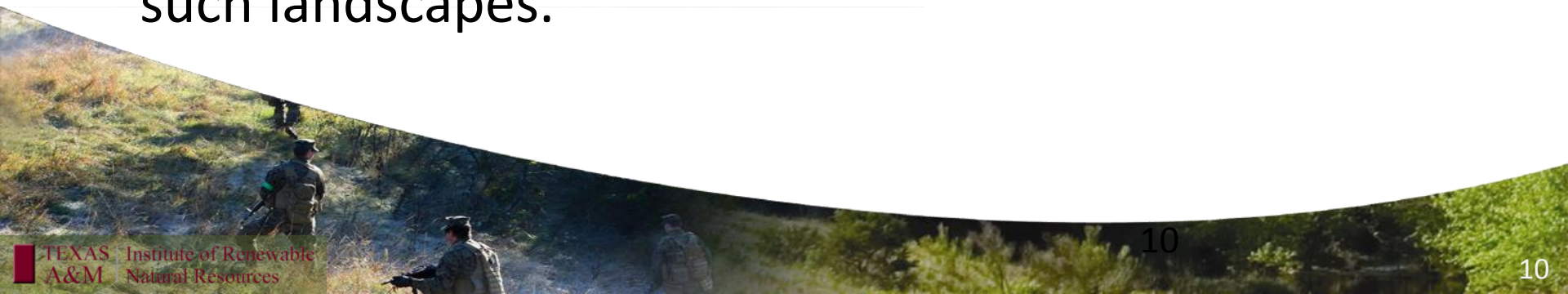
- \$3.5 million in DoD REPI funds for first-ever Sentinel Landscape
- 2,600 acres of South Puget Prairie habitat restoration and protection
- WA DNR acquisition (\$1.7 million) added to Mima Mounds Natural Area Preserve
- Sustainability in Prisons and Washington Veterans Corps provided manpower
- USFWS funded Habitat Conservation Plan (\$1.7 million) for Thurston County
- USDA NRCS directed \$2.3M to protect critical prairie habitat through Farm and Ranch Lands Protection Program (FRPP)



FRPP was NOT used as a direct match for REPI funding, but rather adjoining parcels were protected through REPI and FRPP separately

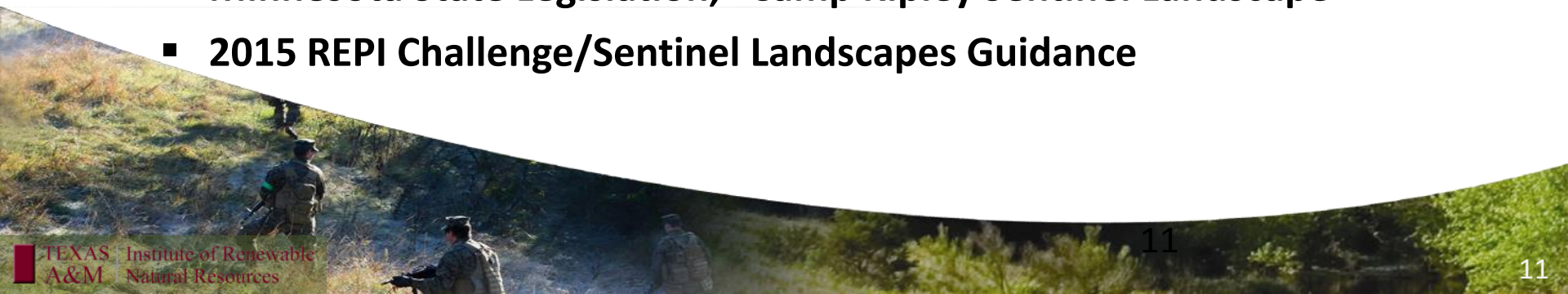
# *Sentinel Landscapes –*

- Sentinel Landscapes are working or natural lands important to the Nation's defense mission – places where preserving the working and rural character of key landscapes strengthens the economies of farms, ranches, and forests; conserves habitat and natural resources; and protects vital test and training missions conducted on those military installations that anchor such landscapes.



# Sentinel Landscapes Way Forward

- **Joint Base Lewis McChord – First Sentinel Landscape**
- **Establishment of Federal Sentinel Landscapes Partnership**
- **2014 Sentinel Landscape “Finalists”**
  - Fort Huachuca, Arizona
  - Avon Park Air Force Range, Florida
  - Fort Stewart/Townsend Bombing Range, Georgia
  - Naval Air Station Patuxent River – Atlantic Test Range, Maryland
  - Camp Ripley, Minnesota
  - Marine Corps Air Station Cherry Point, North Carolina
  - Eglin AFB, Florida
- **Next Sentinel Landscape Designations (Early 2015)**
- **Minnesota State Legislation, “Camp Ripley Sentinel Landscape”**
- **2015 REPI Challenge/Sentinel Landscapes Guidance**



# SENTINEL LANDSCAPES

## What Can You Do?

- REPI Program [www.repi.mil](http://www.repi.mil)
- NCSL's "Preparing for Duty – State Options in Sustaining Military Installations"
- NCSL's LEGISBRIEF – "Sentinel Landscapes: A Novel Approach to Land Conservation"
- 2015 REPI Challenge Guidance release (January 2015)
- Minnesota State Legislation
  - Camp Ripley Sentinel Landscape (Stay Tuned)
  - Minnesota Sustainable Forest Incentive Act (MN Statutes Chapter 290C)
- Partnering Opportunities, e.g. USDA Regional Conservation Partnership Program (RCPP)

