





upbell Soup  
FRAMENTO



A banner with the text "Food Grows Where Water Flows" is displayed in a dry, cracked desert landscape. The banner is white with black text and is mounted on a structure. The background shows a clear blue sky and some sparse, dry vegetation. The foreground is dominated by deep, dark cracks in the parched, light-colored soil.

**Food Grows Where Water Flows**

**How has the Drought Impacted  
California Agriculture?**

- 
- 
- 1. California Water Action Plan**
  - 2. Curtailments**
  - 3. The Sustainable Groundwater Management Act**
  - 4. Require Water Use to Meet “Beneficial Use” Criteria**
  - 5. Gone After “Waste and Unreasonable Use”**
  - 6. Water Use Efficiency Quantification**
  - 7. Unimpaired Flows Proposal**







Tehama-Colusa  
Canal

Glenn-Colusa  
Irrigation District  
Canal

Proposed  
Holthouse  
Reservoir

Proposed  
Terminal Regulating  
Reservoir

Proposed Sites Reservoir





# Expansion of Los Vaqueros Reservoir



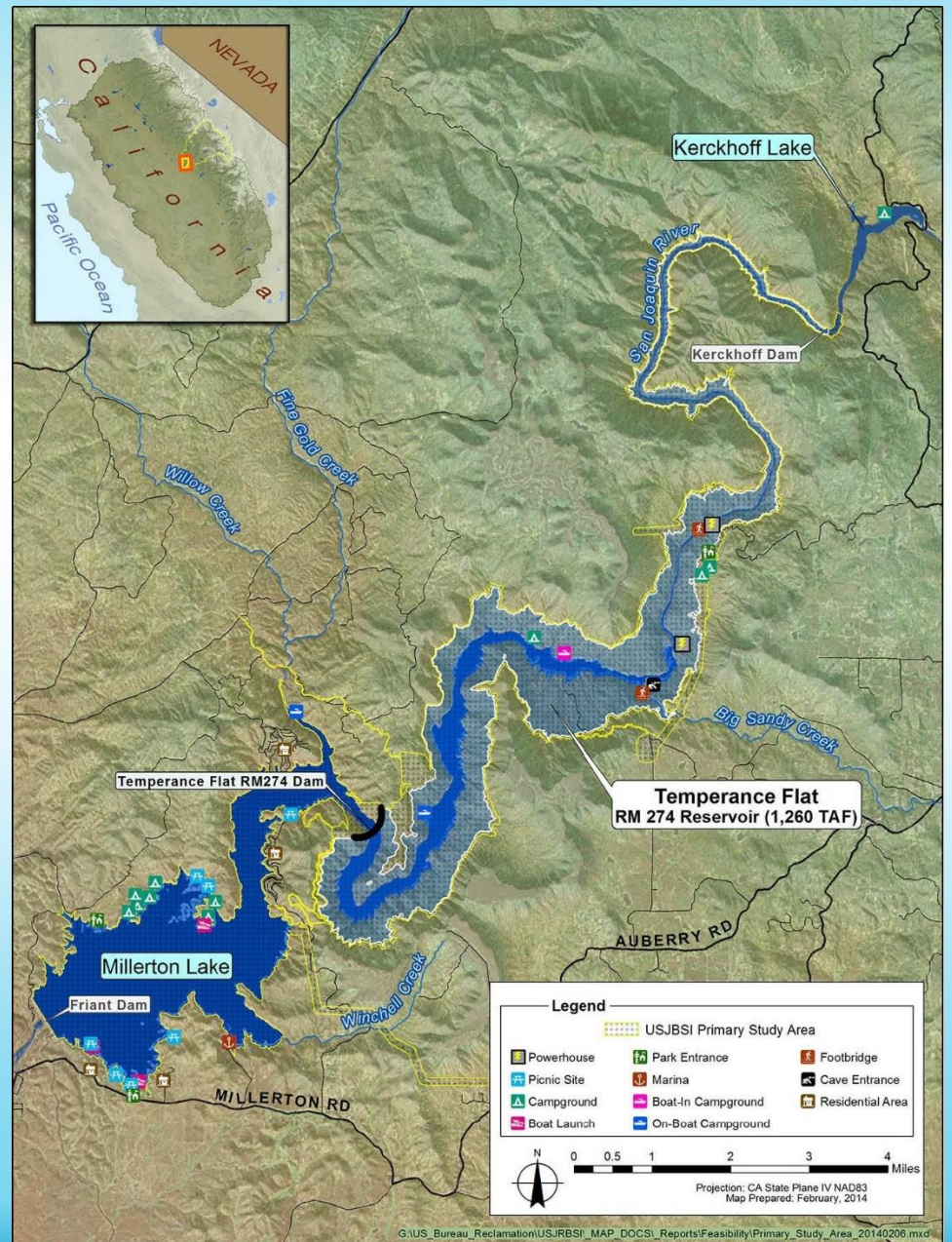
Additional expansion of Los Vaqueros Reservoir, located offstream in Contra Costa County could help replace Hetch Hetchy and improve coordination between principal Bay Area water agencies - improving overall reliability.



California Farm Bureau Federation

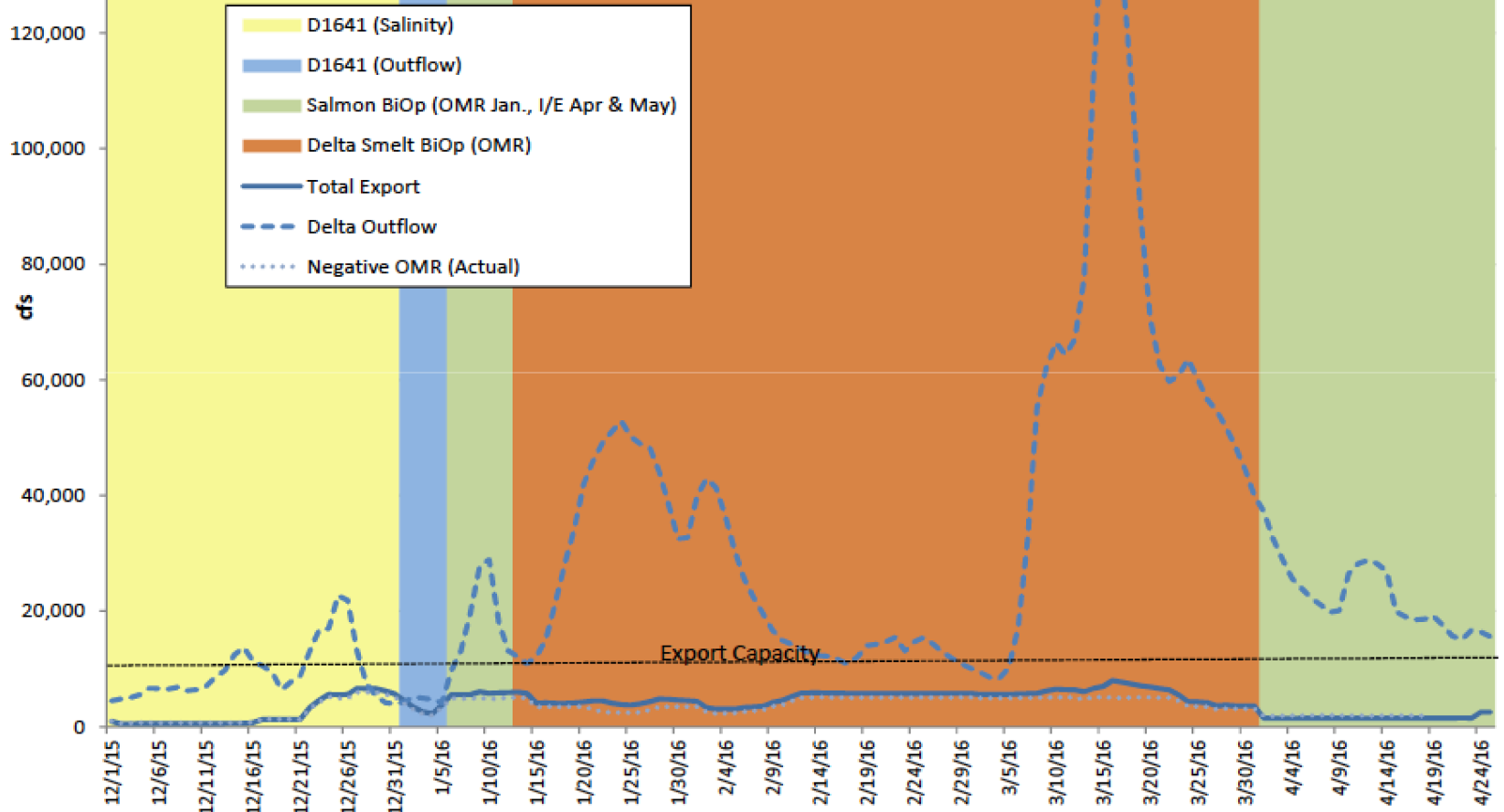


# Temperance Flat



## 2016 Export Constraints

<b>Total Volume Dec1-Apr25</b>	
<b>Exports</b>	<b>1,149 TAF</b>
<b>Outflow</b>	<b>8,159 TAF</b>
<b>BiOps Impacts</b>	<b>1,049 TAF</b>



# How Much Water Does It Take?

**37 gallons per cup of coffee**  
(not including the paper cup, or plastic lid)

and

**53 gallons for a latte**

